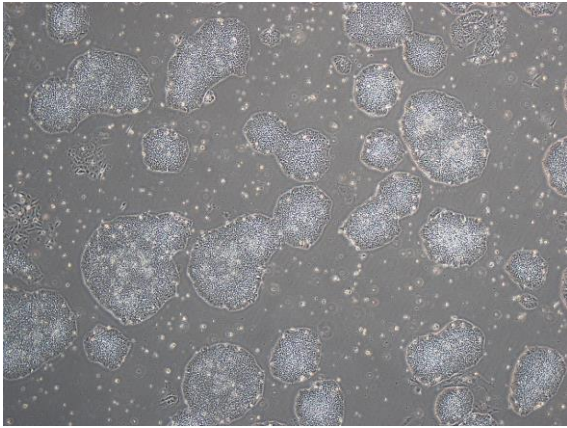
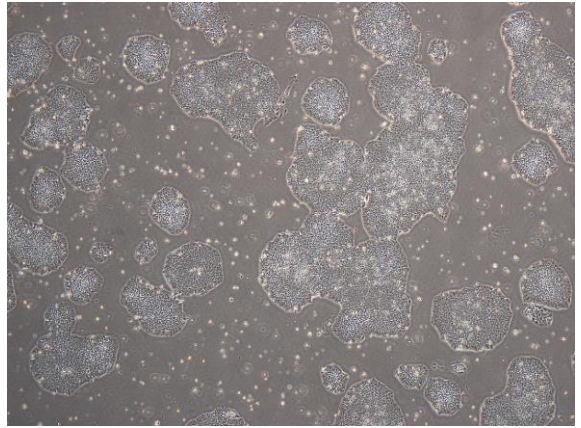


【 CiRA-j-1133 】 Morphology of iPSC colonies

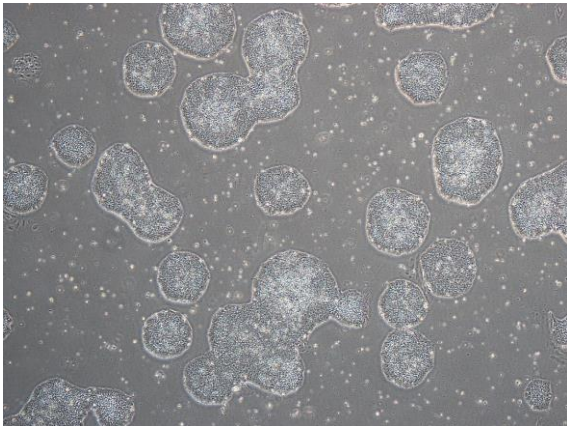
CiRA-j-1133-A: passage-2



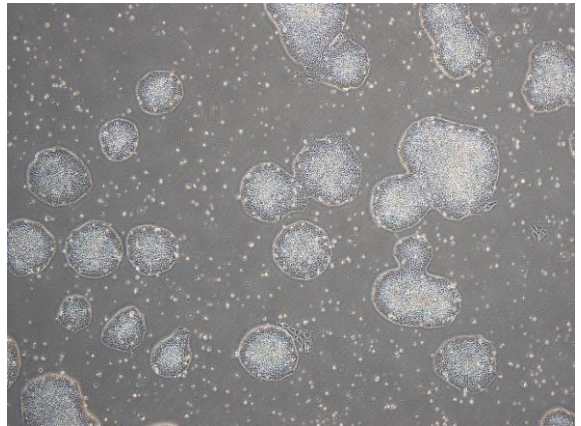
CiRA-j-1133-B: passage-2



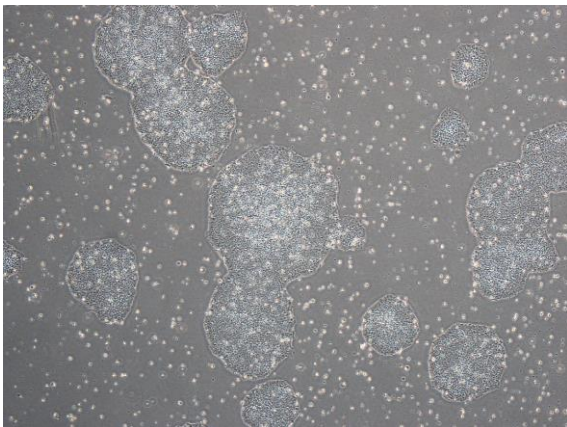
CiRA-j-1133-C: passage-2



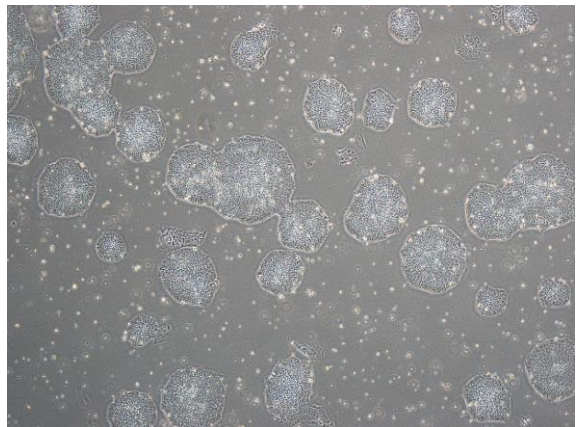
CiRA-j-1133-D: passage-2



CiRA-j-1133-E: passage-2



CiRA-j-1133-F: passage-2



(All images were captured at 4x magnification)